

Literaturliste Kontinuität in der Medizin

- Barbara Starfield
Contribution of Primary Care to Health Systems and Health, 2005,
The Milbank Quarterly
[Contribution of primary care to health systems and health - PubMed](#)

Kernaussage: Continuous care ermöglicht Vertrauensaufbau in 2-5 Jahren

- Michael M. Kochen Allgemeinmedizin, 4. Auflage, Thieme 2012
Erlebte Anamnese

Kernaussage: Erlebtes (Symptome-grenzwertige Befunde) bleibt immer präsent

- Haggerty, J. L., Roberge, D., Freeman, G. K., & Beaulieu, C. (2013). Experienced continuity of care when patients see multiple clinicians: a qualitative metasummary. *Annals of family medicine*, 11(3), 262–271. <https://doi.org/10.1370/afm.1499>

Kernaussage: 3 Typen der Kontinuität:

Beziehungs-, Management- Informations-Kontinuität

Kranke und Angehörige empfinden ein Gefühl der Sicherheit und des Vertrauens

- Haggerty, J. L., Roberge, D., Freeman, G. K., Beaulieu, C., & Bréton, M. (2012). Validation of a generic measure of continuity of care: when patients encounter several clinicians. *Annals of family medicine*, 10(5), 443–451. <https://doi.org/10.1370/afm.1378>

Kernaussage: Entwicklung eines Messinstruments für Managementkontinuität

- Hogne Sandvik, Øystein Hetlevik, Jesper Blinkenberg and Steinar Hunskaar
Continuity in general practice as predictor of mortality, acute hospitalisation, and use of out-of-hours care:
a registry-based observational study in Norway
British Journal of General Practice, February 2022
<https://pubmed.ncbi.nlm.nih.gov/34607797/>

Kernaussage: Mit zunehmender der Dauer der Arzt-Patientenbeziehung reduzieren sich die Inanspruchnahme von Ambulanzdiensten, Krankenhauseinweisungen und die Mortalität

- Ebba Cohen & Ida Lindman
Importance of continuity of care from a patient perspective –
a cross-sectional study in Swedish health care

Kernaussage: Zugang zu (bestimmten) Hausarzt ist für die meisten Patient:innen wichtig, unabhängig von Alter und Geschlecht

- Baker, R., Boulton, M., Windridge, K., Tarrant, C., Bankart, J., & Freeman, G. K. (2007). Interpersonal continuity of care: a cross-sectional survey of primary care patients' preferences and their experiences. *The British journal of general practice : the journal of the Royal College of General Practitioners*, 57(537), 283–289
<https://pmc.ncbi.nlm.nih.gov/articles/PMC2043338/>

Kernaussage: 2/3 der Patient:innen ist eine bekannte und vertrauenswürdige Person wichtig

- Heaton, J., Corden, A., & Parker, G. (2012). 'Continuity of care': a critical interpretive synthesis of how the concept was elaborated by a national researchprogramme. *International journal of integrated care*, 12, e12. <https://doi.org/10.5334/ijic.794>

Kernaussage: Kontinuität wird in verschiedene Dimensionen von Patient:innen und Betreuer:innen erfahren

- Pereira Gray, D. J., Sidaway-Lee, K., White, E., Thorne, A., & Evans, P. H. (2018). Continuity of care with doctors - a matter of life and death? A systematic review of continuity of care and mortality. *BMJ open*, 8(6), e021161. <https://doi.org/10.1136/bmjopen-2017-021161>

Kernaussage: Signifikante Reduktion der Sterblichkeit durch Kontinuität

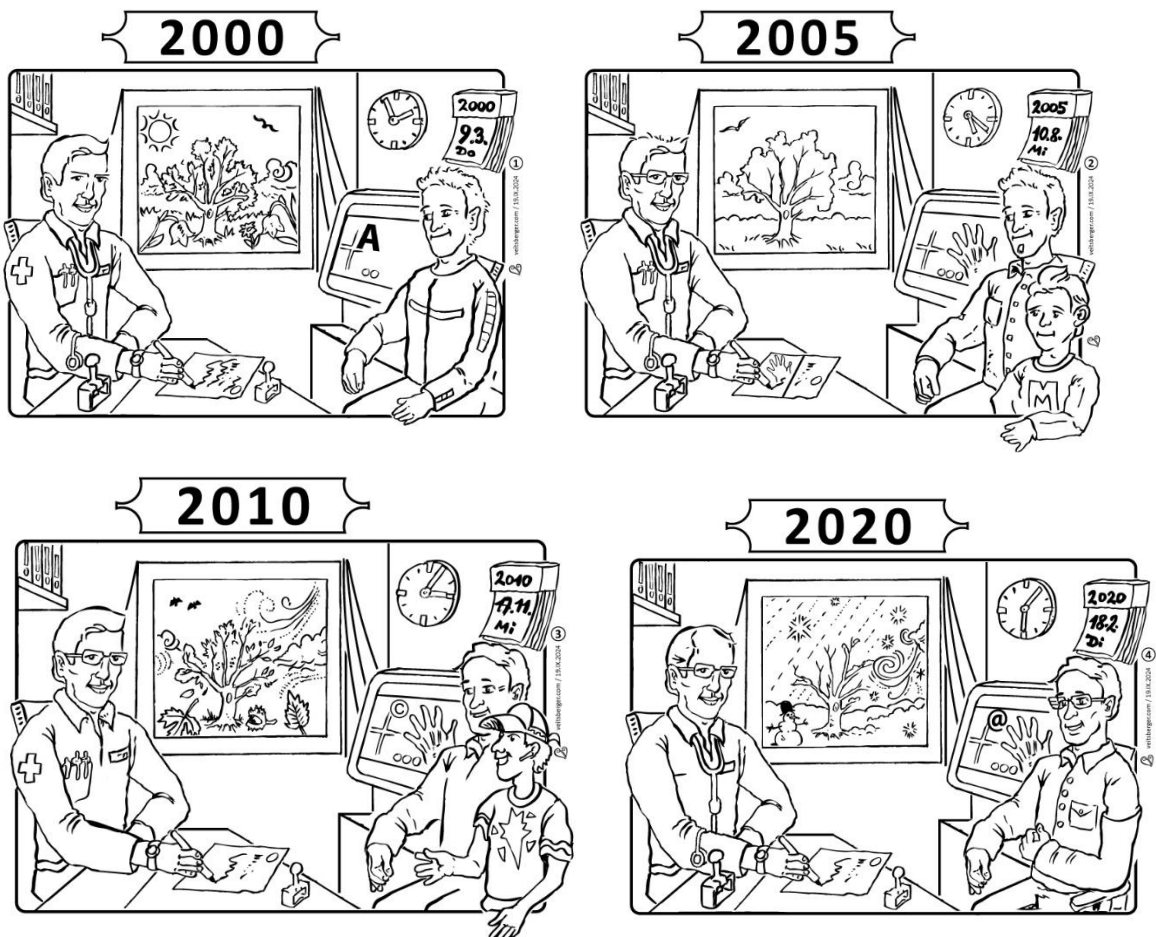
- Cohen-Mekelburg, S., Saini, S. D., Krein, S. L., Hofer, T. P., Wallace, B. I., Hollingsworth, J. M., Bynum, J. P. W., Wiitala, W., Burns, J., Higgins, P. D. R., & Waljee, A. K. (2020). Association of Continuity of Care With Outcomes in US Veterans With Inflammatory Bowel Disease. *JAMA network open*, 3(9), e2015899. <https://doi.org/10.1001/jamanetworkopen.2020.15899>

Kernaussage: bei entzündlichen Darmerkrankungen durch Kontinuität verminderte Anzahl von Krankheitsschüben, stationären Aufnahmen und chirurgischen Interventionen

- Watt, G., O'Donnell, C., & Sridharan, S. (2011). Building on Julian Tudor Hart's example of anticipatory care. Primary health care research & development, 12(1), 3–10. <https://doi.org/10.1017/S1463423610000216>

Kernaussage: Prävention leidet an zunehmender Fragmentierung zwischen Generalisten und Spezialisten – Notwendigkeit der Kombination der jeweiligen Stärken

Dr. Peter Sigmund, 10/2024



Graphik: Gerhard Veitsberger 2024

Continuity of Care (CoC) is the generalist's tool

Relational continuity with a regular general practitioner was shown (Cohen and Lindman 2024) to:

To coincide with better health outcomes including reduced morbidity and overall mortality rates

To be highly appreciated by patients

To be an essential part of qualitative care from the clinician's perspective

Relational continuity with a patient-centered approach means

Most contacts with the same physician (RGP) **CoC Index**

Context information (history, family, circumstances, values..)

Special, long-standing relationship: trust

First point of contact, dispatching gatekeeping, even coordinating works without CoC.

Family medicine according to the definition does not.

Susanne Rabady ÖGAM,

KL Krems

Linz, May 2024

Studien zum Thema COC

- ad 1) Cohen, Ebba, and Ida Lindman. "Importance of continuity of care from a patient perspective—a cross-sectional study in Swedish health care." *Scandinavian Journal of Primary Health Care* 42.1 (2024): 195-200.
- Ad 2) Gray, Denis J. Pereira, et al. "Continuity of care with doctors—a matter of life and death? A systematic review of continuity of care and mortality." *BMJ open* 8.6 (2018): e021161
- Baker, Richard, et al. "Primary medical care continuity and patient mortality: a systematic review." *British Journal of General Practice* 70.698 (2020): e600-e611.
- Wolinsky, Fredric D., et al. "Continuity of care with a primary care physician and mortality in older adults." *Journals of Gerontology Series A: Biomedical Sciences and Medical Sciences* 65.4 (2010): 421 - 428.
- Shin, Dong Wook, et al. "Impact of continuity of care on mortality and health care costs: a nationwide cohort study in Korea." *The Annals of Family Medicine* 12.6 (2014): 534 -541.
- Sandvik, Hogne, et al. "Continuity in general practice as predictor of mortality, acute hospitalisation, and use of out-of-hours care: a registry-based observational study in Norway." *British Journal of General Practice* 72.715 (2022): e84-e90.
- Weir, Daniala L., et al. "The interplay between continuity of care, multimorbidity, and adverse events in patients with diabetes." *Medical care* 54.4 (2016): 386-393.
- Van Walraven, Carl, et al. "The association between continuity of care and outcomes: a systematic and critical review." *Journal of evaluation in clinical practice* 16.5 (2010): 947-956.
- Nyweide, David J., et al. "Continuity of care and the risk of preventable hospitalization in older adults." *JAMA internal medicine* 173.20 (2013): 1879-1885
- Hansen, Anne Helen, and May-Lill Johansen. "Personal continuity of GP care and outpatient specialist visits in people with type 2 diabetes: A cross-sectional survey." *Plos one* 17.10 (2022): e0276054.